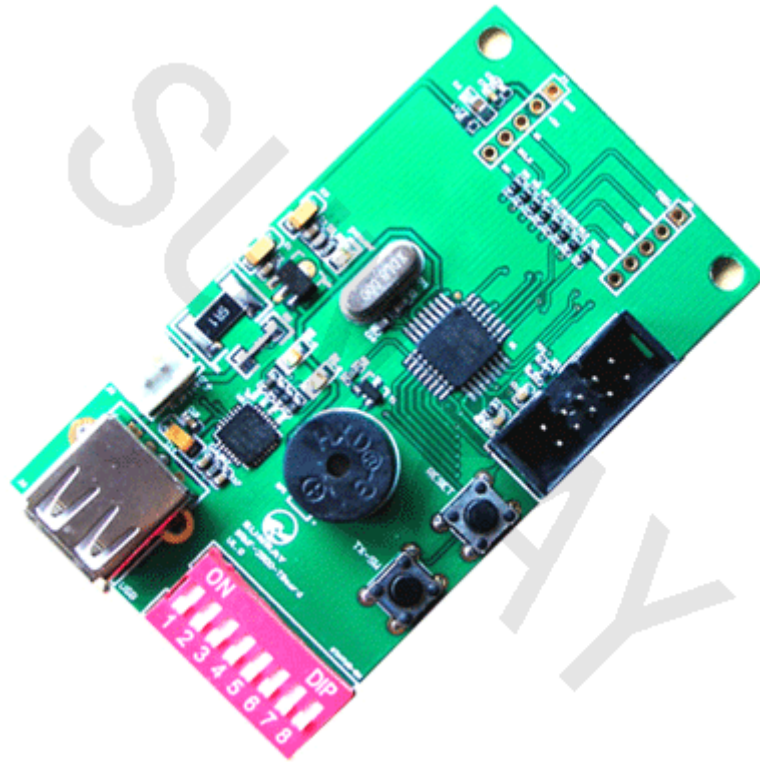


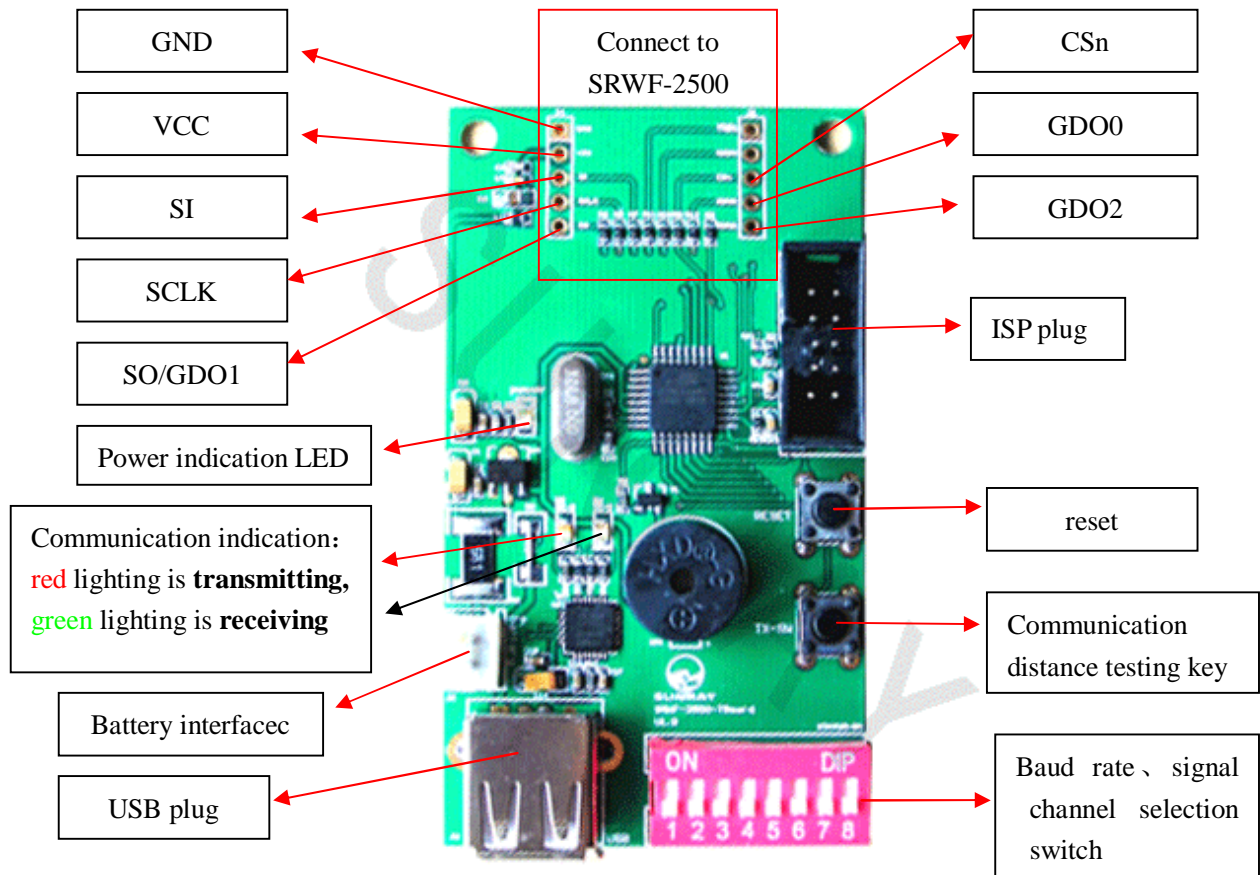
# SRWF-2500 Wireless Transceiver Data Module Evaluation Board user manual



ShangHai Sunray Technology Co.,Ltd

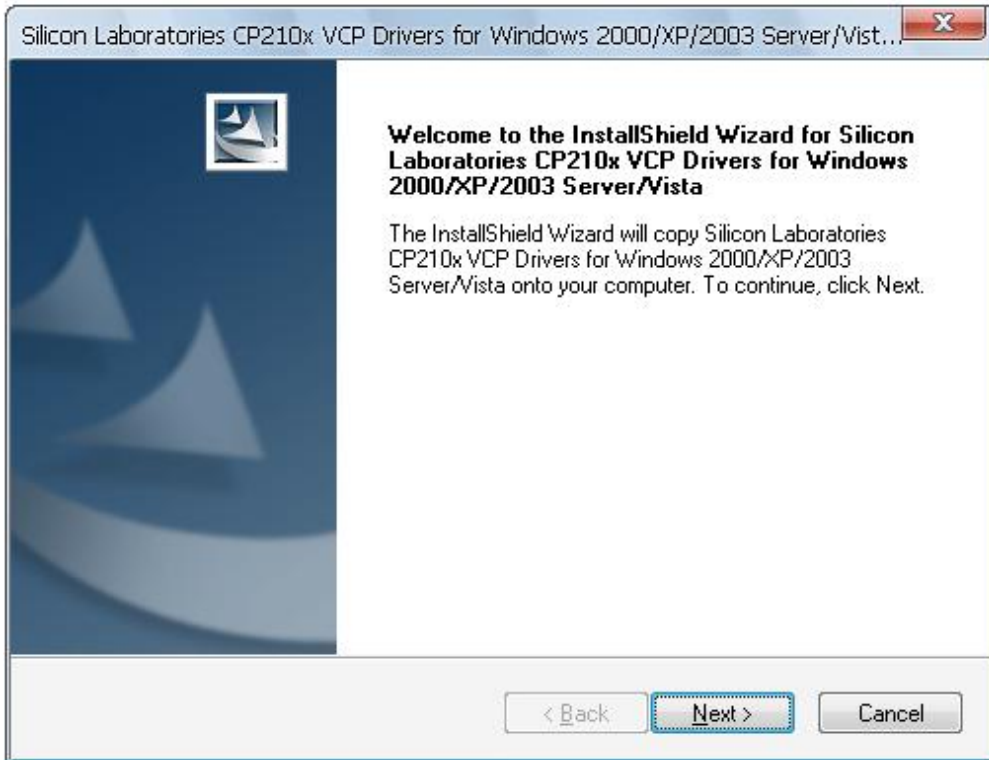
## I 、 Evaluation board description

The evaluation board is designed for our product SRWF-2500, and you can use it to test the working parameters of SRWF-2500 or do some communication experiments based on SRWF-2500.

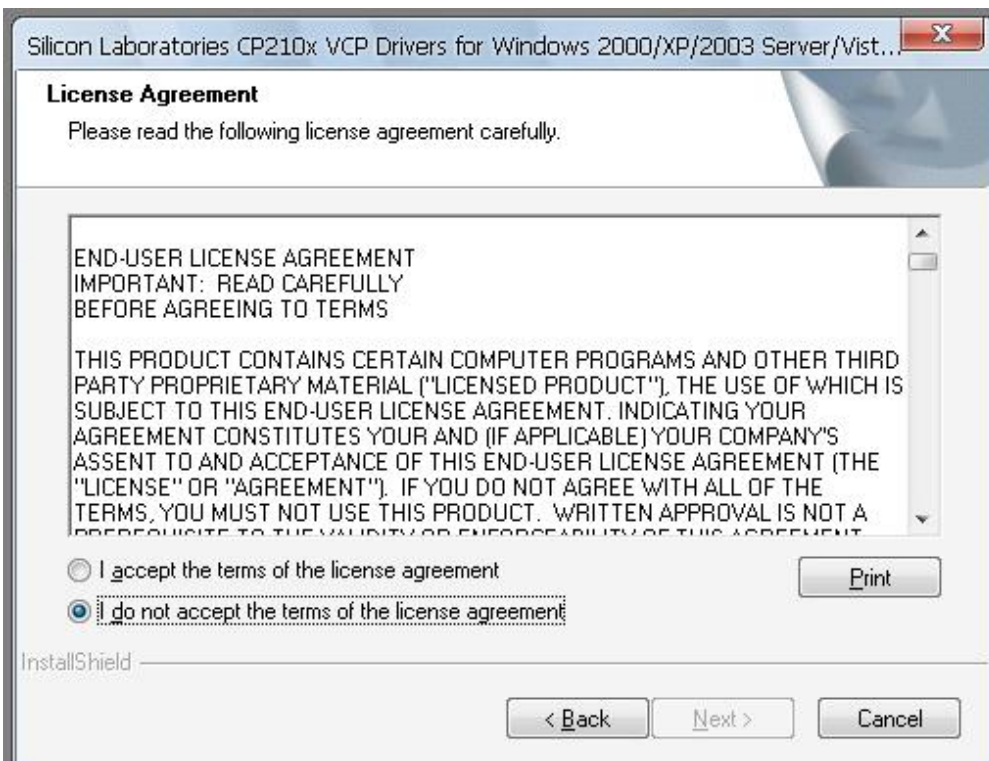


## II install driver (applicable to the Windows 2000/XP/Server 2003/Vista (v3.11)):

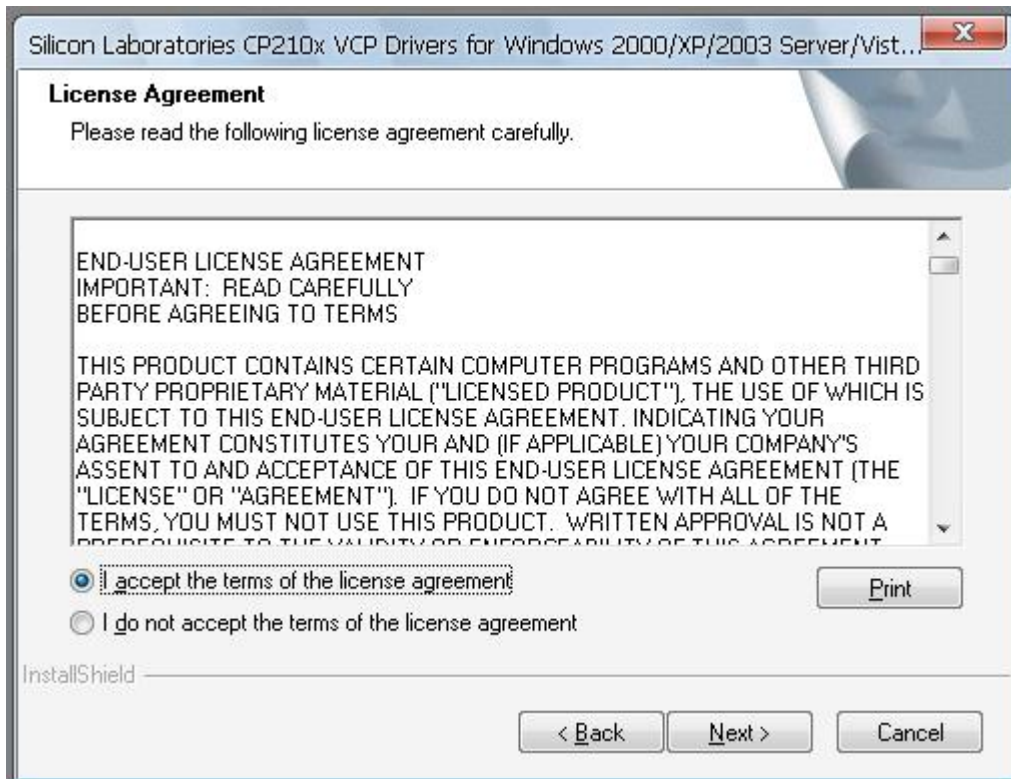
Find “SRWF-SmartRF-usb-Driver.exe” firstly in Terminal CD-ROM, double-click it to display the Welcome picture



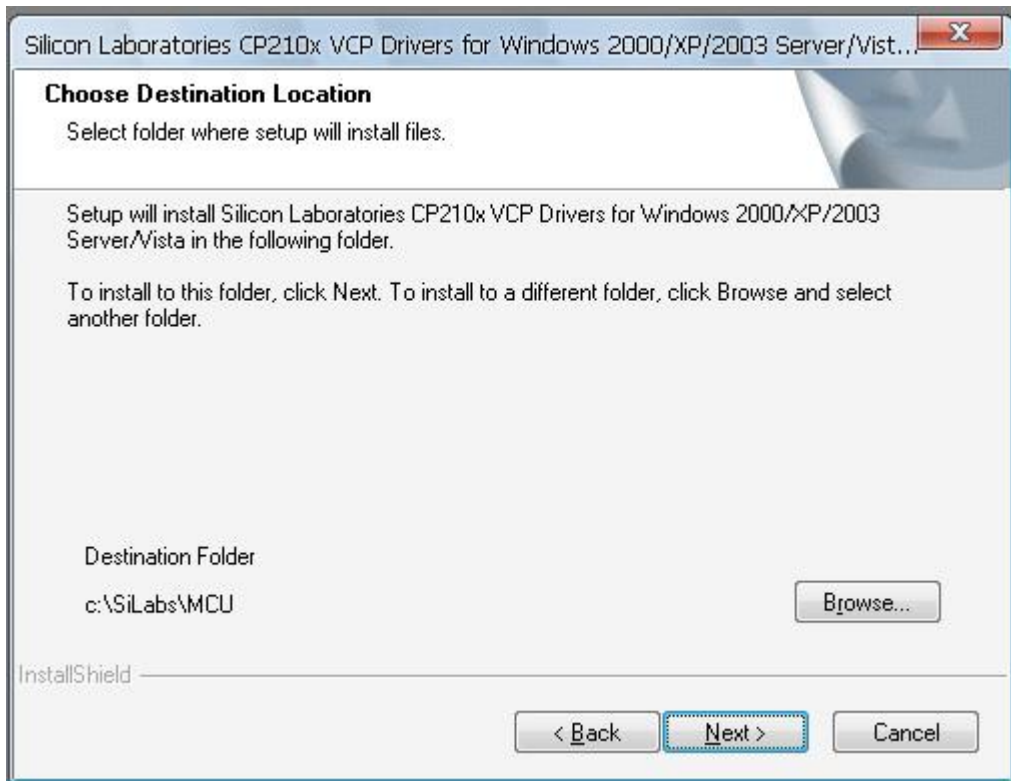
click “Next”



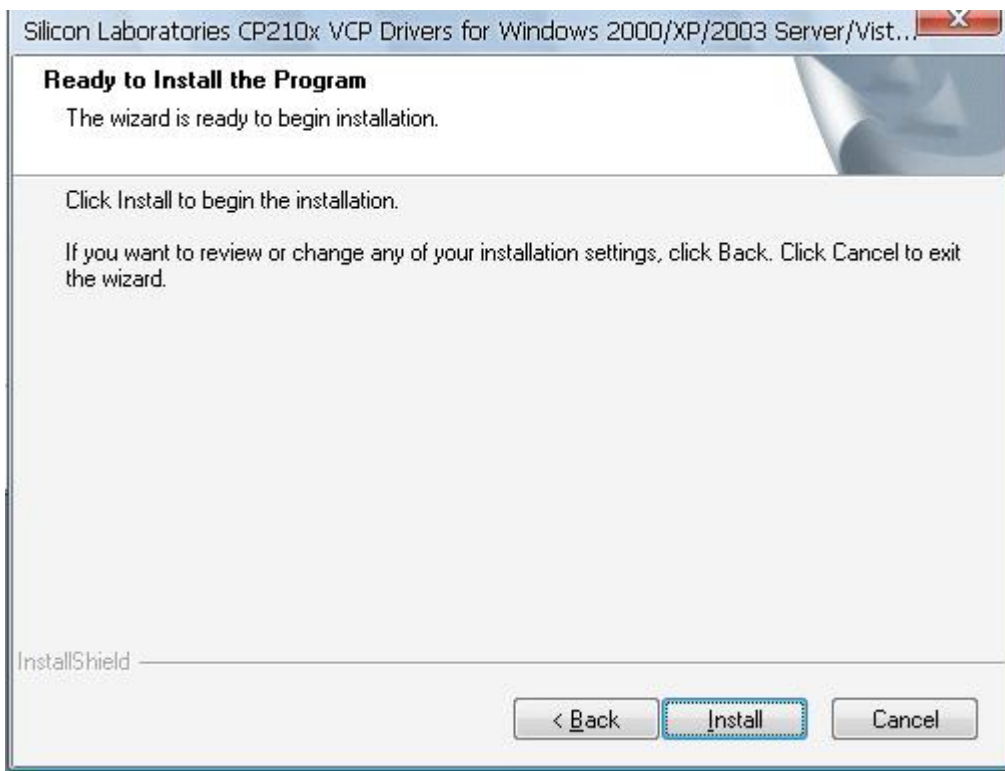
select “I accept the terms of the license agreement”



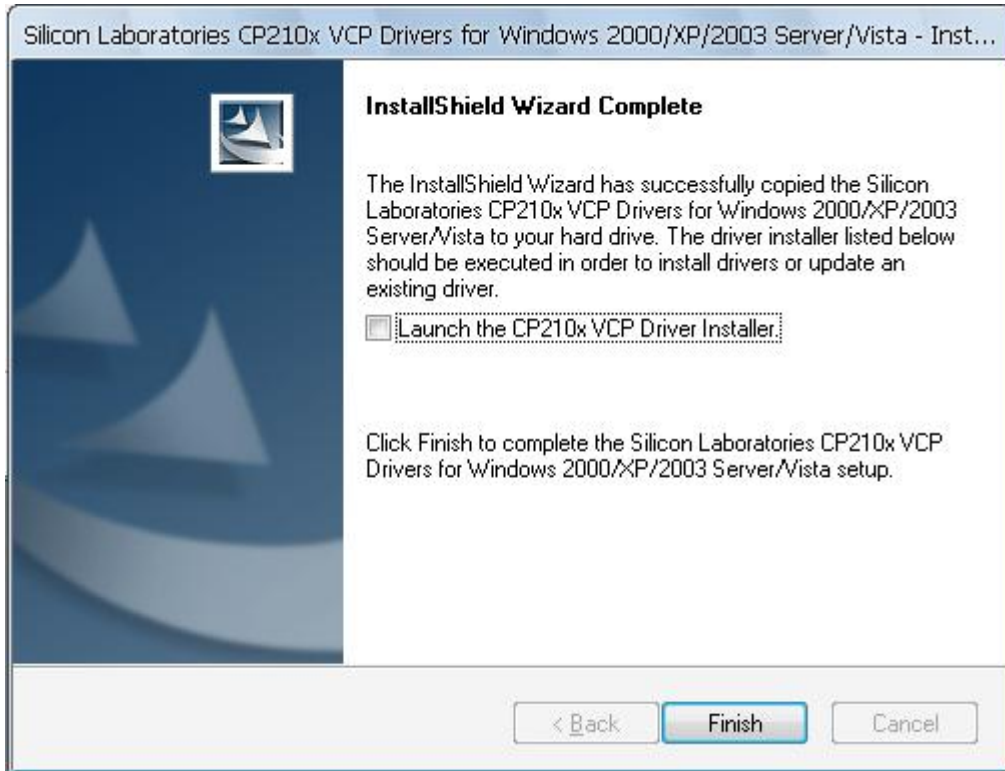
click “Next”



click "Next"



click "Install" to go on the installation



At last , click "finish" to finish the installation .

## III Function description

You must determine that the baud rate and signal channel selection switches of the evaluation boards are in the same states , otherwise the experiment of communication will not be successful . Specific DIP switch settings , see the appendix for use .

### 1. Data transmission experiment through USB PC interface

After the successful driver installation ,connect 2 evaluation boards to the usb PC interface though two USB extension cables . Then right-click “my computer” to select “properties” , in the pop-up dialog box , view “Hardware → Device Manager → Port(COM and LPT)” , as follows figure , you can know the COM number of evaluation boards(maybe other number ,it is not static) that is allocated by PC system .

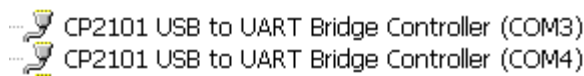
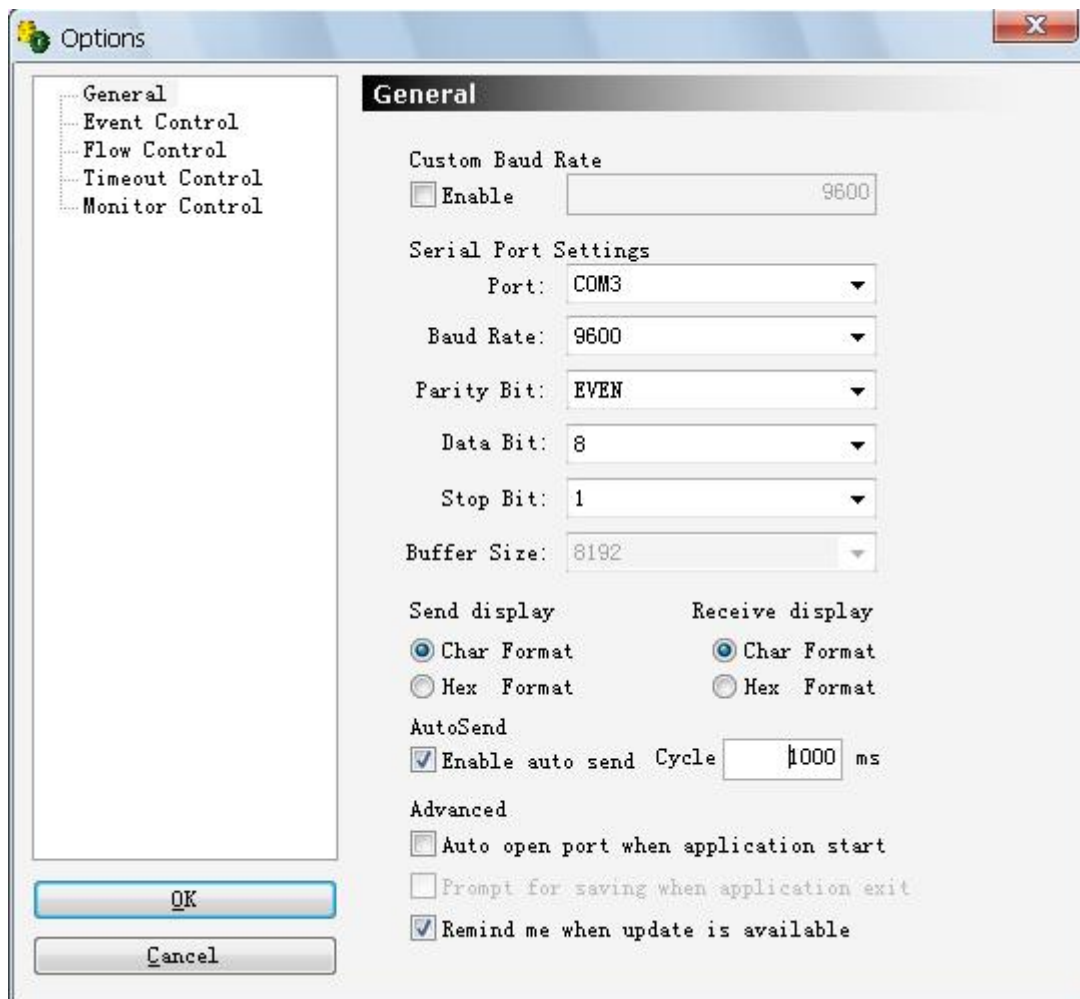


Figure 1.

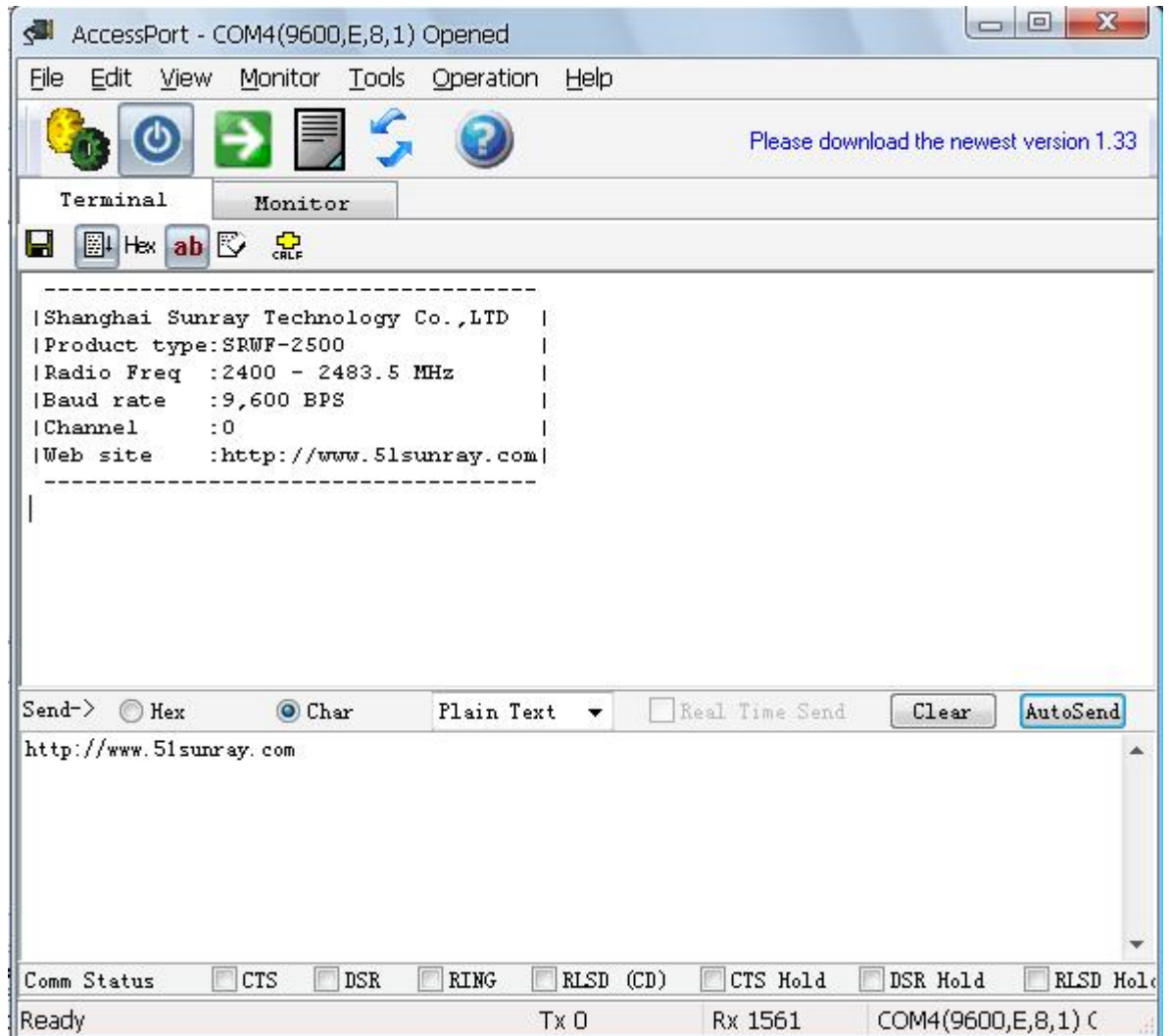
After the correct connection , double-click “AccessPort.exe” and run the serial debugging assistant , view “tools → configuration” , as follows and set the consistent data format and select the COM number :



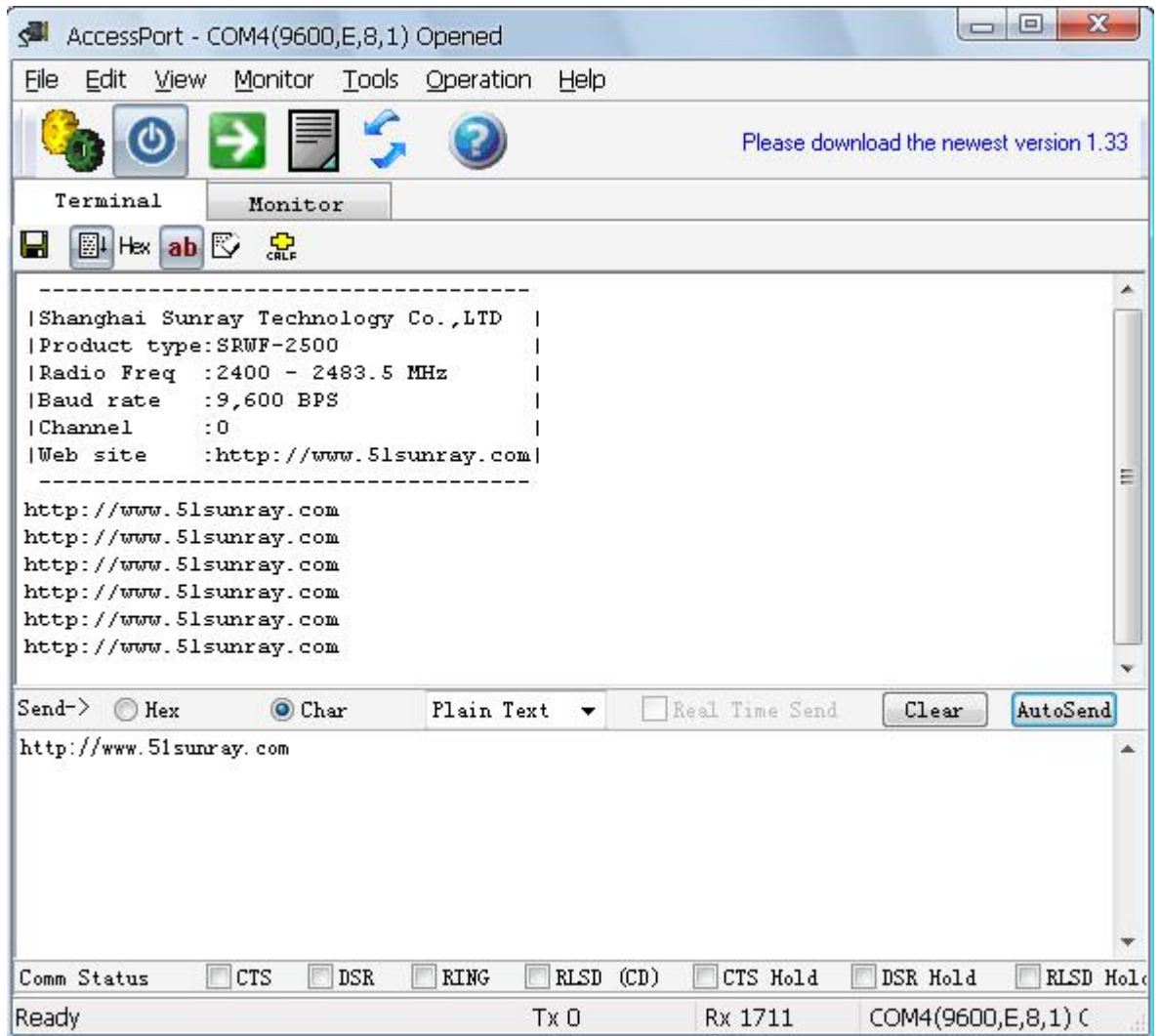


# ShangHai Sunray Technology Co.,Ltd

Click the reset key of the evaluation board and you can know the information of wireless module、channel 、 baud rate and so on , as shown in the red box:



Click the button “Autosend” of another serial debugging assistant software , and the transmitting data will display the data area of serial debugging assistant .

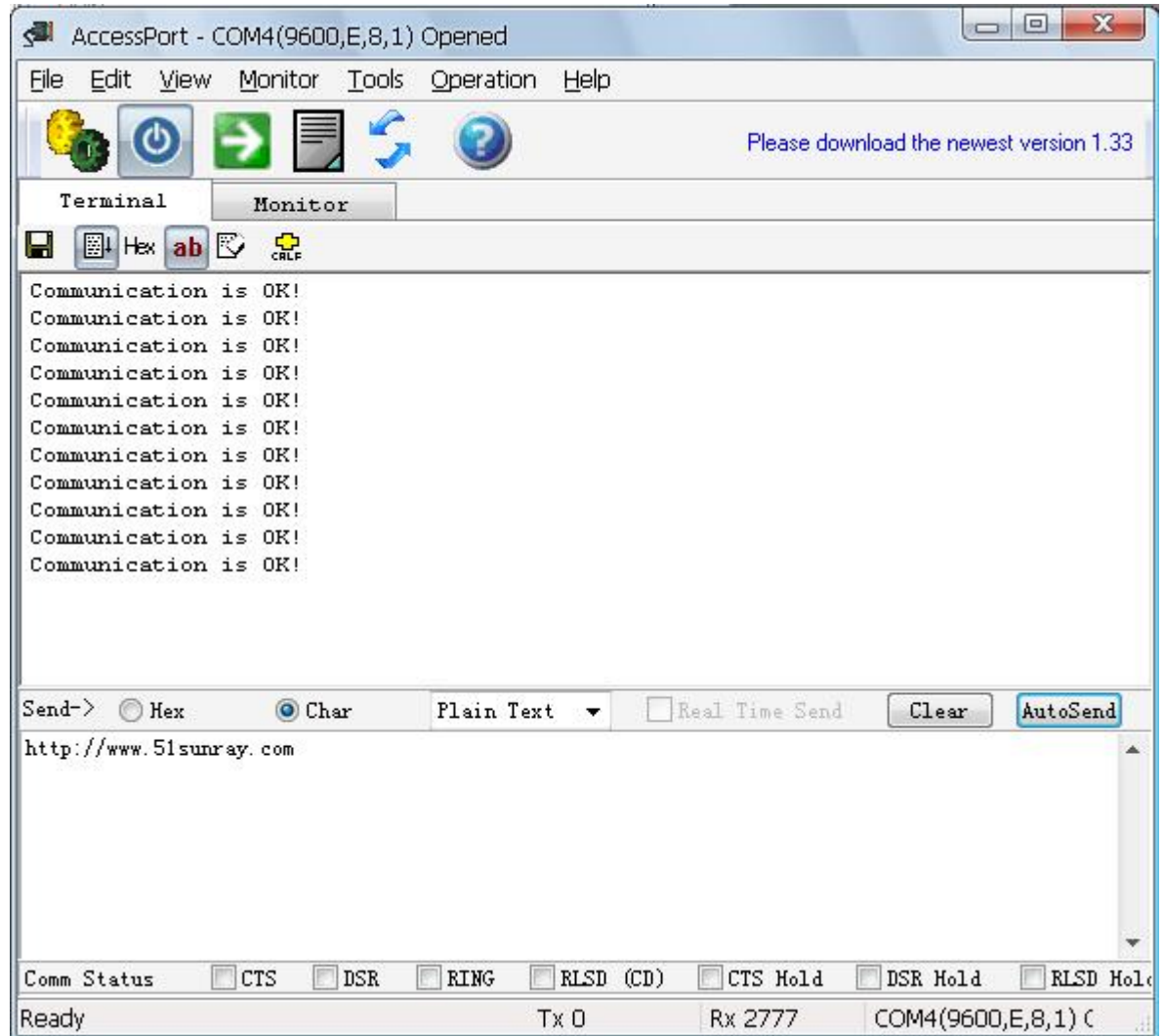


The same , if data is transmitted by this wireless module , and another wireless module will receive the data and display in the screen .

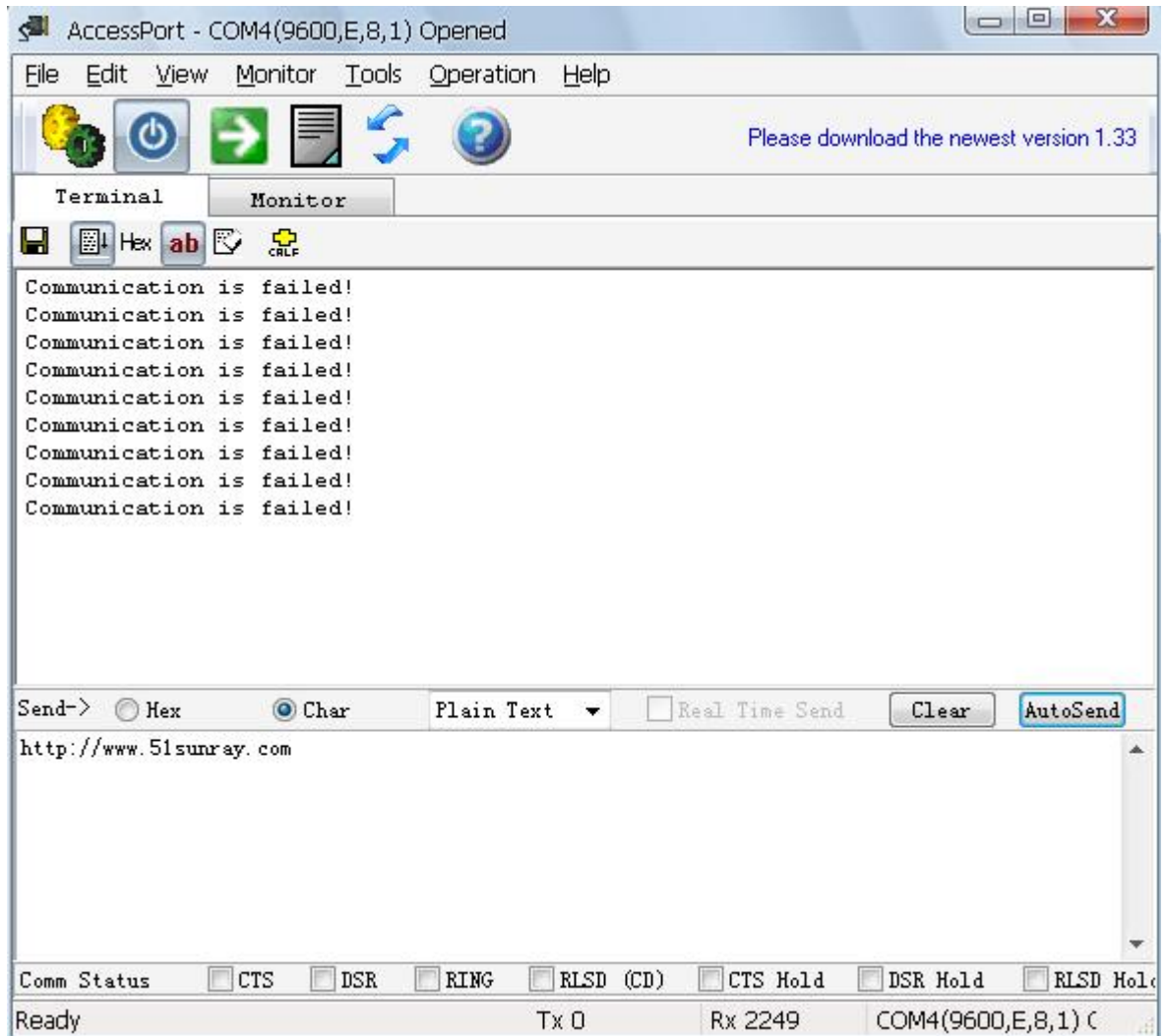
## 2. Communication distance testing

Press the communication distance testing key of one evaluation board(assumed to be A), and a special packet will be transmitted , if another wireless module(assumed to be B) receive the packet correctly , buzzer of the corresponding evaluation board(B) will call , this indicates B module received the packet correctly , then the B module will send another packet to A , if the A module also receive the packet correctly , buzzer of A evaluation will call , this indicates the communication between of A and B is successful .

At the same time , if the evaluation board is connected to the USB PC interface , “Communication is OK!” will be displayed in the case of successful communication ,

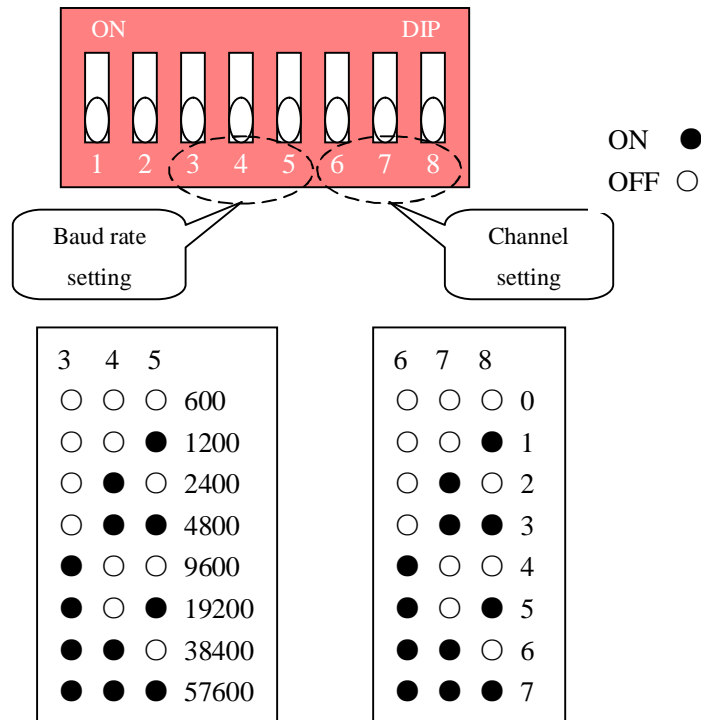


otherwise “Communication is failed” will be displayed in the case of failed communication .



- ☆ You also can set a new channel or baud rate , and repeat the experiment .
- ☆ see to the as follow appendix about the description of channel and baud rate

## IV Appendix



## V Product size (unit : mm)



### **ShangHai Sunray Technology Co.,Ltd**

**ADDRESS:** No 201,Keyuan RD Zhangjiang  
high-tech park, Shanghai Pudong china

**Tel:** +86-021-50275250 /50275255

**Fax:** +86-021-50270187

**Email:** [sales@tangray.com](mailto:sales@tangray.com)

**Website:** [www.51sunray.com](http://www.51sunray.com)