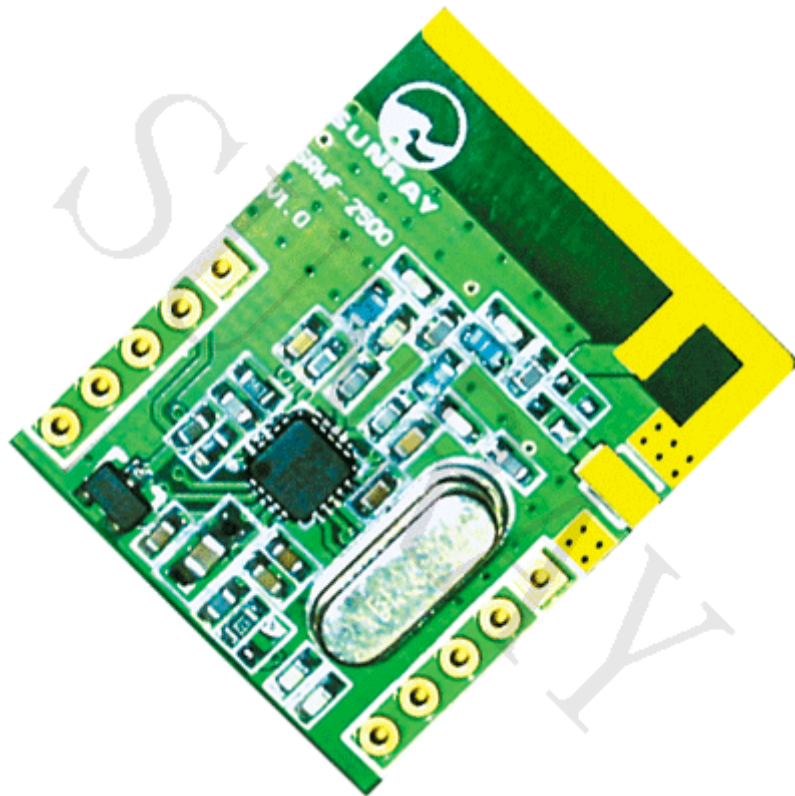


SRWF-2500 Wireless Transceiver Data Module user manual



ShangHai Sunray Technology Co.,Ltd



※ Applications Field

- 2400-2483.5 MHz ISM/SRD band systems
- Consumer electronics
- Wireless game controllers
- Wireless audio
- Wireless keyboard and mouse
- RF enabled remote controls

※ Product Description

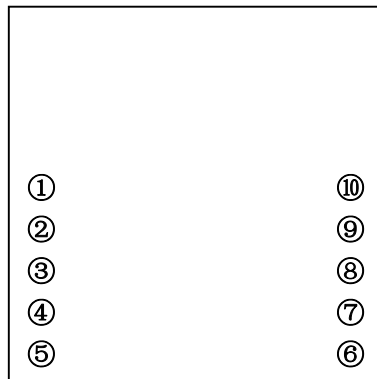
The product is for 2.4GHz single RFIC transceiver module, using TI's low-power chip CC2500, to meet a variety of low-cost and low-power wireless product development application.

This product is mainly used for the secondary development of clients, and the module itself, with no microcontroller. Module is equipped with a 2.54mm pin-pin distance of communication with a microcontroller interface, the specific definition and parameters of pin-description see page after the details of this document.

To develop your system based on this product more efficient and convenient, you can download the datasheet at the following links to TI's CC2500, improve the efficiency of your development.

Download link is: <http://focus.ti.com/lit/ds/symlink/cc2500.pdf>

I Pin Description



Pin #	Pin name	Pin type	Description
1	GND	Ground	Analog and digital noise isolation ground connection
2	VCC	Power	3V ~ 3.6V power supply connection
3	SI	Digital input	Serial configuration interface, data input
4	SCLK	Digital input	Serial configuration interface, clock input
5	SO/GDO1	Digital output	Serial configuration interface, data output. Optional general output pin when CSn is high
6	GDO2	Digital output	<ul style="list-style-type: none"> ★ Test signals ★ FIFO status signals ★ Clear Channel Indicator ★ Clock output, down-divided from XOSC ★ Serial output RX data
7	GDO0	Digital I/O	<ul style="list-style-type: none"> ★ Test signals ★ FIFO status signals ★ Clear Channel Indicator ★ Clock output, down-divided from XOSC ★ Serial output RX data ★ Serial input TX data
8	CSn	Digital input	Serial configuration interface, chip select
9	NC		No connection
10	NC		No connection

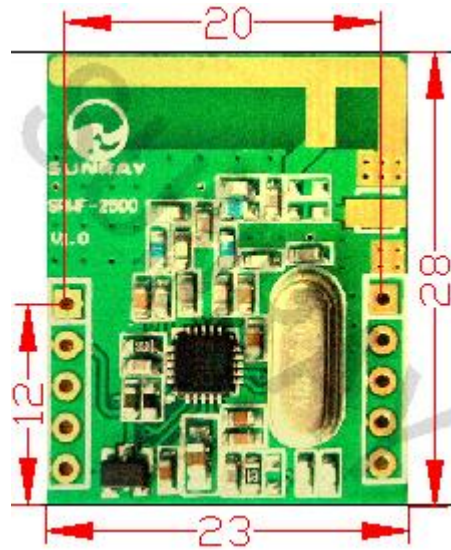
II Working qualification:

Parameter	Minimum value	Max value	remark
Temperature	-20℃	60℃	
Working voltage	3.0V	3.6V	
Power supply current	>30mA	~	
Working humidity	10%	90%	

Technical specification of SRWF-2500

item	Parameter	Memo
Modulation mode	FSK	
Work frequency	2400MHz ~ 2483.5MHz	
Transmission power	$\leq 1\text{dBm}$	
Receiving sensitivity	$\leq -105\text{dBm}(1200\text{bps})$	
Channel amount	8channel	or more
Transmitting current	$21 \pm 1\text{mA}$ (0dBm)	
Receiving current	$17 \pm 1\text{mA}$ (0dBm)	
Sleeping current	$\leq 7 \mu\text{A}$	normal temperature -20~60℃
Dimension	28mm×23mm×8mm	
Transmit distance	70m(9600bps, 0dBm)	PCB antenna on-chip

III Product size (unit : mm)



ShangHai Sunray Technology Co.,Ltd

ADDRESS: No 201,Keyuan RD Zhangjiang
high-tech park, Shanghai Pudong china

Tel: +86-021-50275250 /50275255

Fax: +86-021-50270187

Email: sales@tangray.com

Website: www.51sunray.com